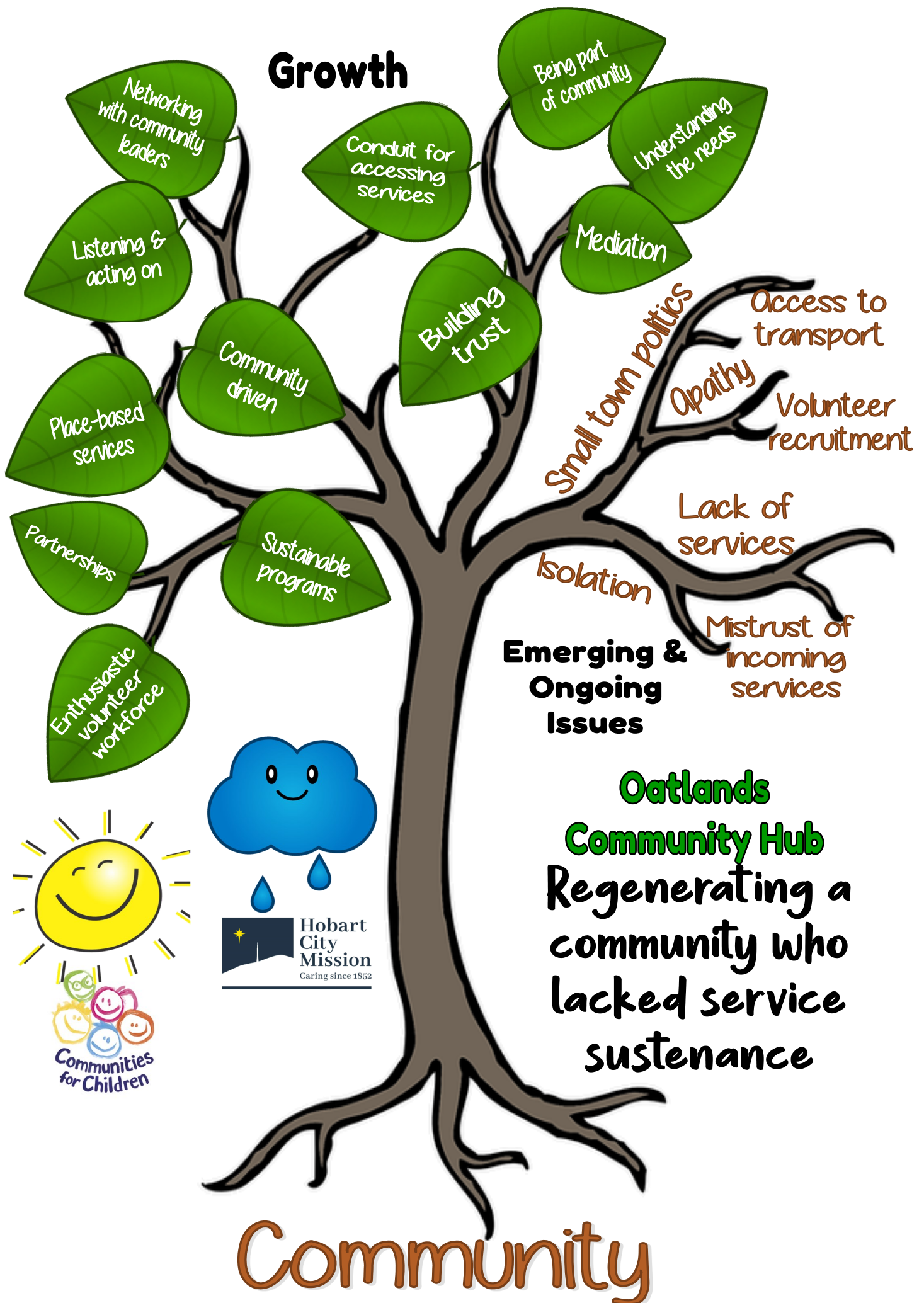


Growth



Oatlands

Community Hub

Regenerating a community who lacked service sustenance



Oatlands Community Hub - Growth

Networking with community leaders

- Spent time at commencement of service to talk individually to leaders
- Built trust amongst leaders, they now seek out Hub for problem solving

Listening and acting on

- Ensuring the community sees that requests/suggestions are being actioned

Building trust

- This was highly important in a community who have been burnt by outside services before

Placed based services

- Has shown to be highly effective especially when considering our community's need

Community driven

- Discussions and consultations have been had with community groups/individuals to gauge need and local children to build a list of activities

Partnerships

- Building networks to provide a holistic service. Partnering with -
 - ⇒ Reclink Tasmania
 - ⇒ Oatlands Community Association
 - ⇒ Oatlands District Progress Association
 - ⇒ 97.1 Mid FM Radio
 - ⇒ Southern Midlands Council

Sustainable programs

- Bingo - requested by community. Helped local radio volunteers to start up sessions, now running every fortnight
- ReGeneration - a group of parents who have a passion for ensuring local children have activities and events. Now ReGen is an association, with funds and a committee. Talks are happening to bring in another Tasmanian group to pilot a program in partnership with ReGen.

Enthusiastic volunteer workforce

- Volunteers run a community garden which provides fresh produce for ER clients and is sustained through fundraising
- ReGen volunteers help to provide activities/events for local children (also CfC funded events)

| | | |
|-----------------------------|------------------|-------------------------|
| Movie Night & Halloween | Letters to Santa | Christmas Pageant Float |
| Christmas Disco | Paint & Shake | Pizza Party |
| Hop To It (Easter egg hunt) | Zoodoo visit | |

Conduit for accessing services

- Community are coming to Hub for referrals onto or accessing other services

Being part of community

- Joining in with events/activities to promote Hub and services

Understanding the needs

- Having lived in Midlands for 22 years and worked in Oatlands for 14 years gives empathy, understanding and commonality

Mediation

- Small communities require a softly softly method when coming up against local politics - not living in Oatlands helps with this
- Someone who will work to bring together individuals with common goals