

SING

A NEW SONG

MORE AND MORE
WORDS + MUSIC LINDSAY STOW

ANS 1004

WWW.SALVATIONARMY.ORG.AU/CAD

AUSTRALIA
SOUTHERN
TERRITORY



Sing A New Song

The Australia Southern Territory Creative Arts Department is pleased to introduce a new vocal series which we believe will meet the needs of Songster Brigades and Choirs throughout the Army.

Designed with smaller vocal ensembles in mind, yet still suitable for larger groups, this new series features songs by Australian composers in styles which are accessible to contemporary congregations. The series is written primarily for two female and one male part; though cued parts are included in some titles for Bass and other divisi voices when required.

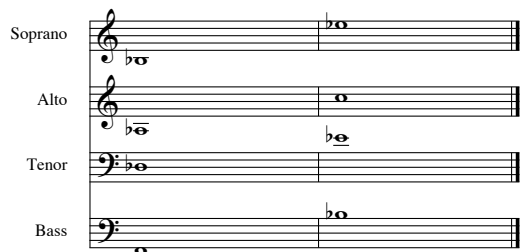
Recorded CD accompaniment tracks are available for each song allowing leaders to rehearse each section of the song and provide for performances by groups who have no or limited musical support.

More And More

Words & Music Lindsay Stow

Lindsay, along with his wife Karyn and three children, soldiers at the Warrnambool Corps in Western Victoria. Having grown up in Warrnambool, the Salvation Army Corps has been his church family and place of worship since the very earliest stages. As is typical of many Salvationists, Lindsay grew up participating in Corps Young People's musical

sections where leaders helped to nurture an appreciation of music and encouraged both musical and spiritual development. Lindsay has continued to be an active member of Corps music sections affording him the opportunity to use his musical gifts as both an expression of worship and a vehicle for service. Lindsay is currently Bandmaster and Worship Ministry Co-ordinator at the Warrnambool Corps.



There isn't any particularly remarkable or compelling backstory to this song. The inspiration came simply through a time of quiet reflection during which I was struck once again by how vast and how enormous our God is, and yet, how intimately and completely he knows us, and despite our frailties and our failings, despite the fact that it's so undeserved, He continues to pour out this amazing, unwavering and unconditional love.

The Salvation Army Australia Southern Territory

Sing A New Song (ANS1004)

More And More

Words & Music: Lindsay Stow

CD 18

Unhurried ♩ = 60

Two staves of piano introduction in 4/4 time, key of B-flat major. The right hand has a melodic line with eighth notes, and the left hand has a simple bass line.

Two staves of piano accompaniment for the first system, measures 1-2. The right hand has a melodic line with eighth notes, and the left hand has a simple bass line. The dynamic marking is *mp*.

Measures 3-4. The vocal line begins with a triplet of eighth notes. The piano accompaniment continues with a melodic line in the right hand and a bass line in the left hand. The dynamic marking is *mp*.

3 *mp*

You were mak - ing plans for me be - fore the world be - gan, so

Two staves of piano accompaniment for the second system, measures 3-4. The right hand has a melodic line with eighth notes, and the left hand has a simple bass line.

Measures 5-6. The vocal line continues with a triplet of eighth notes. The piano accompaniment continues with a melodic line in the right hand and a bass line in the left hand. The dynamic marking is *mp*.

5

man - y things a - bout you Lord, I don't un - der - stand. You

Two staves of piano accompaniment for the third system, measures 5-6. The right hand has a melodic line with eighth notes, and the left hand has a simple bass line. There are triplet markings in the right hand.

7 *cresc.*

know my thoughts my in - ner part, you see what's hid - den in my heart, and
Oo

This system contains the first two staves of music. The vocal line is in the upper staff, and the piano accompaniment is in the lower staff. The key signature has two flats (B-flat and E-flat), and the time signature is 4/4. The music begins with a treble clef and a common time signature. The vocal line starts with a quarter note on G4, followed by eighth notes. The piano accompaniment features a steady eighth-note pattern in the right hand and a bass line in the left hand.

cresc.

This system shows the piano accompaniment for the second system. It continues the eighth-note pattern in the right hand and the bass line in the left hand. The dynamic marking *cresc.* is placed above the first staff.

9 *mf*

still your love is un - re - served for me.

This system contains the third and fourth staves of music. The vocal line is in the upper staff, and the piano accompaniment is in the lower staff. The key signature remains two flats. The vocal line continues with a quarter note on G4, followed by eighth notes. The piano accompaniment continues with the eighth-note pattern. The dynamic marking *mf* is placed above the first staff.

mf

This system shows the piano accompaniment for the fourth system. It continues the eighth-note pattern in the right hand and the bass line in the left hand. The dynamic marking *mf* is placed above the first staff.

mp

No - thing that I've done can change your love, and

This system contains the fifth and sixth staves of music. The vocal line is in the upper staff, and the piano accompaniment is in the lower staff. The key signature remains two flats. The vocal line continues with a quarter note on G4, followed by eighth notes. The piano accompaniment continues with the eighth-note pattern. The dynamic marking *mp* is placed above the first staff.

mp

This system shows the piano accompaniment for the sixth system. It continues the eighth-note pattern in the right hand and the bass line in the left hand. The dynamic marking *mp* is placed above the first staff.

13

no - thing that I do will stop the bless - ings from your hand a - bove.

15

Ev - en when your fav - ours I ig - nore, Oh

mf *p*

17

Fa - ther, you love me more and more.

To Coda \oplus

p 8^{va} L.H. γ To Coda \oplus

mp

You are faith - ful, ev - ery-day your

mp

21

prom - is-es are true, - so of - ten Lord, I don't re - turn that

23

faith - ful-ness to you. - - - - - Though I dis - a - ppoint you con - stant - ly your

cresc.

cresc.